



Tails

FROM MINNESOTA



For Friends of Hearing and Service Dogs of Minnesota Summer 2008 Vol. 19 Issue 3

In 1988, Lucky, pictured above, was the first dog we adopted from an animal shelter. She was homeless and was scheduled to be euthanized that day. Lucky served as our demonstration dog for 11 years. She is symbolic of our commitment to save homeless dogs while fulfilling our mission to serve people with disabilities.

Dog Of Her Dreams

Sarah Rieke and Faye

by Shelley Frederickson

Sarah Rieke of Eagan, Minn., dreamed of having a Service Dog for a long time. When she contracted polio as a child living in India, the disease damaged nerve cells in her spinal cord and caused paralysis in her left leg. Although she survived the initial infection, Sarah developed post-polio syndrome. The fatigue and muscle weakness she experiences make it difficult for her to keep her balance and effects her ability to lift or carry objects without risk of falling.

“I gained mobility with the assistance of a leg brace, cane and walker,” Sarah says. “But I knew that having a Service Dog would help me with the daily tasks that made living independently difficult.” She first applied for a Service Dog with another organization while living in Eau Claire, Wis., but she couldn’t afford the costs of traveling to their location to train with a dog.

Undaunted, Sarah continued researching Service Dog organizations when she moved back to Minnesota. While surfing the Internet, she discovered Hearing and Service Dogs of Minnesota. Sarah applied and was paired with Faye,



Sarah and Faye

a 2-year-old black Labrador. When they met for the first time, Sarah says she was instantly impressed with Faye’s precision and skills. “I knew she was the dog for me!” she says.

Sarah quickly developed a strong bond with Faye, and the two went to work learning the skills that make a great team. Graduate Services Coordinator Mona Elder says she was pleasantly surprised at how fast their training progressed. “When Faye first moved in with Sarah we talked about teaching her how to retrieve Sarah’s cane,” Mona says. “When I stopped by a few days later, she was already retrieving the cane! I was amazed at how quickly Faye learned that skill because it was totally new for her.”

Sarah says she thoroughly enjoyed the training experience. “It was great learning new techniques and watching Faye become more and more confident in her abilities,” she recalls.

Throughout the process, Sarah says, the key to success was consistency. The time and persistence in training paid off, and soon Faye added skills to help Sarah stand and maintain her balance.

Sarah says Faye fits in well with her active lifestyle, which includes working full-time and going to school part-time to earn a degree in supervisory management. “Faye comes to work with me and sits under my desk. The call center I work at is nice and quiet, which makes it a great environment for Faye,” Sarah comments.

She adds that Faye’s impact on her life has been substantial. “First and foremost, Faye is a great companion. I love having her around. She enjoys going on walks, and I get more exercise. She’s a great help to me. With her, I’m more independent,” Sarah says.

She encourages people considering an assistance dog to apply. “Assistance dogs are great companions and will help you more than you can imagine. Hearing and Service Dogs of Minnesota will match you with a great dog!” she says enthusiastically. Sarah thanks the organization’s supporters and everyone who helped bring Faye into her life. Sarah’s final comment when asked how it feels to be certified? A very enthusiastic “Whoo hoo!” ☐

Inside This Issue

<i>From the Executive Director</i>	<i>2</i>
<i>Wally LaBerge & Newman</i>	<i>3</i>
<i>Ken Stenzel & Calvin</i>	<i>4</i>
<i>New Staff Members</i>	<i>5</i>
<i>Development News</i>	<i>8</i>
<i>Kristi Nicholson & Odie</i>	<i>9</i>
<i>Terry Hansmeier & Stanley</i>	<i>10</i>
<i>Vicki Brotzel & Slim</i>	<i>11</i>
<i>Volunteer Spotlight</i>	<i>11</i>

THOSE WHO MADE THIS PLACEMENT POSSIBLE

Dog Source
Becky and Glen Bodien

Veterinary Services
Life Care Animal Hospital

Puppy Raiser
Autumn Brodhecker



From the Executive Director *Al Peters & Rosie*



look and they are felt by all of us. Whether its gas prices or food prices, our expenses are going up and our incomes are not necessarily following along.

At the recently completed phone-a-thon fundraiser, I heard from a number of people who had contributed during previous phone-a-thons but couldn't do so this year due to job changes or other economy related pressures. Others, however, made extraordinary efforts to step forward and help the organization, knowing that times were challenging for non-profit organizations, too.

Just as individuals are adversely affected by the economy, non-profit agencies like ours also feel pressure in more ways than one. Not only are some contributors less able to help this year, but our expenses for utilities and for transporting and feeding dogs have also risen significantly. We need your help! Please contribute as generously as you can. And plan to attend this year's Heel and Wheel event. Your participation will help bring in much-needed income so we can continue to meet the needs of people with disabilities. See the brochure in the center of this newsletter.

Assistance Dogs International

This year, Director of Training Kim Hyde and I were able to attend the combined International Guide Dog Federation convention and the Assistance Dogs International convention in London, England. What a wonderful experience! Kim

Al Peters bids farewell to new friend Yumi Taniguchi and her Hearing Dog, Sammy, from Japan. □



New friends were made at the Gala Dinner on June 23, 2008 in London England. Pictured are assistance dog providers from varied organizations around the world: L to R, Dave Rankin from Scotland, Becky Barnes and Guide Dog, Flyer, from USA, Silvana Gross from Switzerland, Al Peters from USA, and Danny Vancoppennolle from Belgium. □



and I visited other schools in England before the conference and learned much about the happenings among our contemporaries around the world. We made vital connections to increase our ability to locate appropriate dogs, utilize forward thinking training methods and bring new service ideas back to Minnesota. Plans for our recently initiated Autism Assist Dog program originated at a similar conference a few years ago.

Kim and I are grateful to Rich and Maggie Cress and Tim and Julie Rainey for each donating a round trip ticket to London so we were able to attend this conference. Thank you so very much! □

Hearing and Service Dogs of Minnesota was honored at the conference for achieving Assistance Dogs



Intentional accreditation during 2007. Al Peters is pictured with other Executive Directors honored at this time by our trade association. Currently, 44 organizations, like Hearing and Service Dogs of Minnesota, have attained this advanced status and 110 other members have yet to achieve accreditation. □

Tails From Minnesota

Published quarterly for friends and supporters of Hearing and Service Dogs of Minnesota

Editor/Layout/Design

Alan M. Peters Sue Schuster

Hearing and Service Dogs of Minnesota is dedicated to enhancing the quality of life for people who are deaf, hard of hearing or disabled by creating mutually beneficial partnerships with specially trained dogs.

We envision a future in which every person who needs and wants an assistance dog can have one.

Hearing Dogs are adopted from local animal shelters, placed with deaf or hard-of-hearing clients and specially trained to alert clients to important sounds in their environment. Service Dogs are trained to help people with physical disabilities by pulling their wheelchairs, picking up or carrying objects, opening doors, flipping light switches and performing other daily tasks. Dogs, training and supplies are provided to each client free of charge.

Hearing and Service Dogs of Minnesota

2537 25th Avenue South
Minneapolis MN 55406
612-729-5986, 612-729-5914 tty/fax
e-mail info@hsdm.org
website www.hsdm.org

Board of Directors

- Mary Quist President
- Carlos Villalpando Vice President
- Lisa Knazan Secretary
- Monique Morton Treasurer
- Sara Braziller Kara Fairbairn
- Lisa Knazan MarySue Krueger
- John Parzych
- Maureen Pranghofer
- John Stockman Len Washko

Staff

- To reach a staff member via phone, dial 612-729-5986. When you hear the greeting, press the extension number.
- Laurie Carlson Event & Volunteer Coordinator
lcarlson@hsdm.org ext. 113
- Rob Carrick Puppy Program Coordinator
rcarrick@hsdm.org ext. 111
- Janet Cobus Development Director
jacobus@hsdm.org ext. 153
- Mona Elder Graduate Services Coordinator
relder@hsdm.org ext. 155
- Kim Hyde Director of Training
khyde@hsdm.org ext. 154
- Rita Jesse Graduate Presenter
- Julianne Larsen Special Programs Coordinator
jlarsen@hsdm.org ext. 117
- Jessica Nadeau Development Assistant
jnadeau@hsdm.org ext. 152
- Angela Olson Kennel Manager
aolson@hsdm.org ext. 156
- Lee Perish Account Assistant
lperish@hsdm.org 612-729-5914 tty
- Al Peters Executive Director
apeters@hsdm.org ext. 116
- Thomas Rehbein Administrative Assistant
trehbein@hsdm.org ext. 151
- Jason Stebner Administrative Assistant
jstebner@hsdm.org ext. 157
- Maria Dunn, Aubrey Prigge
Kennel Assistants



One Great Dog

Wally LaBerge and Newman

by Julianne Larsen

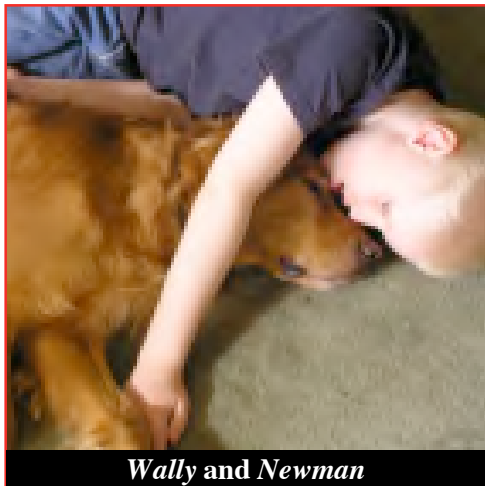
For Tim and Victoria LaBerge of St. Paul, Minn., a dog is much more than a companion for the kids. Their 8-year-old son, Wally, has autism, and the family's newest member has become a bridge between Wally and the rest of the world.

After attending a workshop at the Autism Society of Minnesota in spring 2007 and learning about Hearing and Service Dogs of Minnesota, Tim and Victoria discovered what a dog can do for a child with autism. "We felt this would be a wonderful thing for our son, both for safety reasons and for social interaction," Victoria says.

Wally occasionally runs away when he is upset or anxious. More frequently, he runs toward people or objects of interest — regardless of whether he's crossing a busy street or venturing into another unsafe situation.

Because of his autism, Wally has great difficulty initiating and sustaining social interactions. "We felt a dog, especially a working dog, would be a natural icebreaker for starting conversations," Victoria adds. "Wally is very interested in people and wants to interact with them, but generally he doesn't have the skills to do so."

After completing the application process, Wally was matched in the spring of 2008 with a Golden Retriever named Newman. Both Wally and his younger brother, Charlie, were immediately comfortable with Newman. As training progressed, Victoria and Tim realized that their expectations of a



Wally and Newman

dog were being met. First, they say, they were relieved that Wally wears a belt, connected to Newman's cape, when the two are out in public. "If Wally tries to run toward something, Newman acts as an anchor and keeps Wally safe," Victoria says. Although an adult always handles Newman, she says it's a great relief not to worry about Wally if he runs.

Recently, Victoria witnessed another wonderful thing. While on a walk, she and Wally saw a group of kids playing. After some coaching from his mother, Wally asked one of the boys his name and said, "My name is Wally, and this is my dog Newman. He helps me." Victoria notes that those sentences "were a long speech for Wally — and something he had never done before."

Wally's parents say they're also noticing a reduction in Wally's anxiety and stress levels. When Wally is upset, Newman places his head in Wally's lap and nudges Wally with his nose. He will also bring toys or other objects to Wally.

Both of these behaviors tend to calm Wally and give him something else to focus on.

Newman sleeps on Wally's bed or nearby. If the two are apart for any length of time, Wally tells Newman everything that happened while they were apart. With Newman at his feet, Wally focuses on his schoolwork for longer stretches of time. He's even said, "Newman, I love you." Victoria says that she can count on one hand the number of times she heard Wally say "I love you" before Newman came into their lives.

Newman is already making a big difference for the entire LaBerge family. Wally's brother, Charlie, gets to help with Newman too. He helps brush Newman and plays with him in the yard. Victoria jokes that they might have to put bunk beds in Wally's room because Charlie wants to sleep with Newman, too. Charlie says, "He's a really good dog. Really good means great!" □

THOSE WHO MADE THIS PLACEMENT POSSIBLE

Dog Source
Lory Worthing

Veterinary Services
Life Care Animal Hospital

Foster Homes
Jan & John Day and
The Turner Family

Puppy Raisers
The Kuehn family

Finishing Home
Inmates at Faribault
Correctional Facility

Puppies In Flight!

Hearing and Service Dogs of Minnesota welcomed new additions to our puppy program on May 3, 2008. The US Airways "Puppies in Flight" program, and the generous volunteers who helped transport the puppies at no cost to us, (pictured right) enabled Hearing and Service Dogs of Minnesota to obtain four black Labrador Retriever puppies from North Carolina. Thank you! □



Not Your Ordinary Lassie!

Ken Stenzel and Calvin

by Amy Sperry

Ken Stenzel of Stillwater, Minn., has been living with multiple sclerosis (MS) for 10 years. MS is a progressive disease that affects the nervous system, resulting in muscle weakness and loss of balance and coordination. As time passed, Ken says he found himself needing more help to remain independent.

“Judith, my wife, has back problems and can’t help me as much as she used to,” he explains. “Even going for a walk or going to the store has become difficult for her, which in turn restricts my ability to go out in public.” A friend at Courage Center St. Croix told Ken about Hearing and Service Dogs of Minnesota.

“I secretly hoped I would be matched with a large, unique-looking dog,” Ken recalls. “And my dream came true with Calvin!” Calvin is a Smooth Coat Collie with one crystal blue eye. Although Ken wasn’t familiar with the breed, “I looked it up on the Internet and fell in love,” he says.

Ken says that the training process went quickly. “Calvin is really intelligent,” Ken says. “He picked up skills quickly and blended into my life right away.” Calvin assists Ken with many everyday tasks. He opens cabinets in Ken’s apartment, which



Ken and Calvin

are equipped with pull cords. He also opens doors, hits push plates, and acts as Ken’s assistant in his daily activities. “Calvin helps me in so many ways that I’m able to cut back on my need for a personal care assistant,” Ken mentions. That’s true for many other people who have Service Dogs, too.

Ken says he feels safer with Calvin, knowing that the dog can help in so many situations. Having Calvin around also gives Ken a mental boost, helping him to get his mind off his MS. He is quick to admit that,

although he and Calvin are certified, they aren’t done training. “Training is a life-long commitment for the two of us,” he says. “You never stop learning.”

Is it all work and no play? Not at all! Calvin loves to play with Ken and Judith. “It’s amazing how he has fun, but is very gentle with Ken at the same time,” Judith says. “Calvin knows when to hold back.”

Ken says he’s eager to talk to groups about Service Dogs and how they help people. “I want to be active in the community in any way I can,” he says, adding, “I’m very excited about having a dog in my life again.” □

THOSE WHO MADE THIS PLACEMENT POSSIBLE

Dog Source
Amy Ross

Veterinary Services
Arden Shoreview Animal Hospital

Puppy Raiser *Field Trainer*
The Stoner Family Laska Parrow

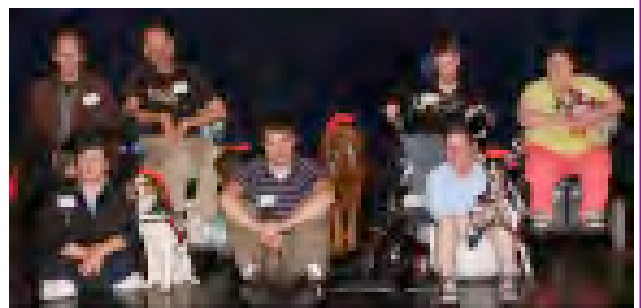
Finishing Home
Inmates at Faribault Correctional Facility

Volunteers
Joanne Nichols, Leslie Flowers and Scott McClure

Graduation!

Ten new Hearing and Service Dogs of Minnesota teams celebrated their graduations on May 17, 2008. In addition to the Hearing and Service Dog teams pictured in the top photo, our first three Autism Assist teams are pictured in the bottom photos. Cake, fellowship and photographs followed the ceremony at Minnehaha Academy. Congratulations grads!

Plan to attend our next graduation event on November 1, 2008. We also invite you to visit our facility for a one-hour *Tails to Tell* tour. You’ll meet our staff, a puppy raiser, a graduate team and, of course, the dogs! Check the back cover of this newsletter for tour dates, or go online www.hsdm.org for a complete list of dates through 2009. □



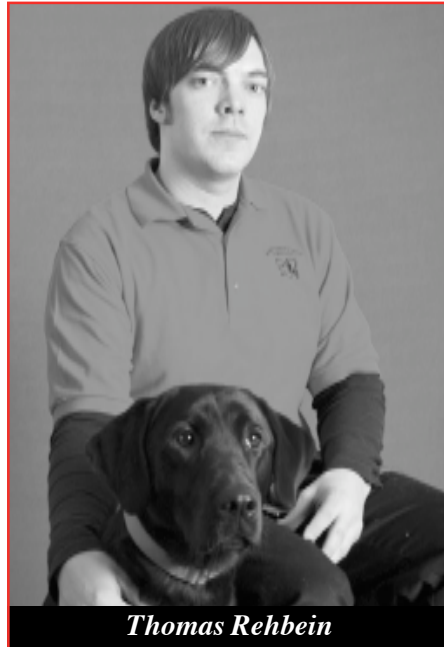
New Staff Members



Jessica Nadeau

Jessica Nadeau recently joined Hearing and Service Dogs of Minnesota as a Development Assistant. Jessica has worked with a variety of nonprofit organizations including the Walker Art Center, the Association of Fundraising Professionals and the Minnesota Planned Giving Council. She is currently a member of United Way's Emerging Leaders program and volunteers with St. Stephen's shelter free store.

Jessica grew up in the Twin Cities area and currently lives in the Uptown area with her boyfriend, Joe and their German Shorthair Pointer/Rottweiler mix, "Ralphie". In her free time, Jessica enjoys reading, music, pool, traveling and kickball. Welcome, Jessica! ☐



Thomas Rehbein

Thomas Rehbein recently joined Hearing and Service Dogs of Minnesota as an Administrative Assistant. He has several years of experience working in an office environment and has experience doing behind-the-scenes work in the entertainment industry, coordinating large events.

Thomas grew up in the Twin Cities and currently resides in South Minneapolis. In his free time he enjoys traveling, freelance writing, music, improv comedy, coffee, jogging, and socializing. Welcome Thomas! ☐



Jason Stebner

Jason Stebner recently returned to the Twin Cities from New York, where he worked as an Executive Secretary at Fordham Law School. His responsibilities as an Administrative Assistant with Hearing and Service Dogs of Minnesota include supporting the training department and handling the organization's technical support. When he's not working, he enjoys watching movies and playing with his parents' West Highland White Terrier, Jilly. Welcome Jason! ☐

Help Us Soar!



We would like to attend an Assistance Dogs International seminar in Grand Rapids, Michigan this fall. Educating and enlightening our staff to the developments in our industry is critical to producing more and better assistance dogs for those who need them.

Generous individuals have provided tickets to help get us there on many occasions in the past. Can you help this time? Donations can be in the form of airline tickets, frequent flyer coupons or monetary contributions to help with hotel and conference fees.

Call Al Peters at 612-729-5986, or 612-729-5914 tty. Thanks! ☐

CONTRIBUTORS

Hearing and Service Dogs of Minnesota is supported by many agencies, companies, and individuals. A very special thanks to you all! The following contributions were received in our office by June 30, 2008. Contributions received by September 30, 2008 will be included in the Fall 2008 issue of Tails From Minnesota.

\$5,000 or more

Fred C. and Katherine B. Andersen Foundation
Edina Federated Women's Club
Robert E Fraser Foundation
Bill McNeely
The P&G Fund of The Greater Cincinnati Foundation
Planet Dog Foundation
United Way

\$2,500 to \$4,999

Athwin Foundation
Sara Braziller
Minneapolis Quota Club Foundation
Carl & Verna Schmidt Foundation
Spring Lake Park Lions
Bill Voedisch & Laurie Carlson

\$1,000 to \$2,499

Ameriprise Financial Judith Christensen The Church of St Richard Fargo Moorehead CFC Greater Minnesota-Dakotas CFC Mavis Klaudt Lions Foundation of Minneapolis Don & Nancy Lynch Carey & Sandi Manson	Midcontinent Foundation The Minnesota Valley Electric Trust Petco Foundation Charlotte & John Rydberg Gary and Carolyn Scherer Family Fund of The Minneapolis The Sweitzer Foundation Weaver Lake Elementary Mary Ruth Weisel
--	---

\$500 to \$999

Alicia & Tim Blank Cloudy Town Sams Barbara Ensborg Sandra & John Hotvet Kevin Johnson Linda Lindborg Betty & Boyd Mast Tricia Murphy North Ramsey Lions	Jessie Rogers Carole & Wayne Stockman John & Jane Stockman JoAnna Trumbull Wells Fargo Doreen & Jeff West David & Jaclyn Wexler Phyllis Wiener & Shayna Berkowitz
--	--

In Kind

Animal Humane Society - Golden Valley Arden Shoreview Animal Hospital Dr. Groth - Banfield Animal Hospital Patty Barnes Laurie Bromwich - Just For Paws Rob Carrick Cause for Paws Judith Christensen Colonial Church of Edina Lance & Anita Conover Davanni's Pizza - Riverside Rita Davis Jan & John Day Elm Creek Animal Hospital Mike & Annette Garaghty Therese Hanson Peter & Janet Hovde Inver Grove Heights Animal Hospital Eric Johannes - LVI Media Productions Perry Jurek Dennis Kamrath Dana Knopic Babs Koch Steve Levine	Life Care Animal Hospital Julie Mach Penny Marsala Mary Ann McCauley - Catalyst Communications Minnesota School of Business - Blaine Minnesota School of Business - Rochester MoneyGram International Isabelle Ouyang Chris Pachel - Twin Cities Veterinary Behavioral Referral Service, LLC Pine Ridge Pet Care Hospital Annie Piper Maureen Pranghofer Jane Schamber Sarah Schmidt Roger & Michelle Siever - Siever's Retrievers Sharon Singleton Twin Cities Obedience Training Club, Inc. Valley View Pet Hospital VCA Cedar Animal Hospital Barbara Wolff
--	---

\$100 to \$499

3M Foundation Albertsons Stores - SuperValu David Allen Amboy Lions Anchor Bank Thomas Anderson Susan Anderson Dianne & Doug Astry Lyle Astry Anne Barasche William & Alexandra Bartolic Thomas Bezek David & Shari Boehnen Richard & Mary Ahern Bonlender Doris & Rex Brown Adam Burrows CH Robinson Foundation Mr & Mrs William Chalgreen Community Shares of Minnesota - Thomson West Eleanor Cook John & Jan Day Susan Day Priscilla Deke Maureen & Michael Driscoll Susan & Len Druskin Norman & Yvonne Eck Ruth Engebretson Daniel & Janet Feeney Jennifer Foley Fort Snelling Lions Mark & Barbara Franssen Bonnie Genin Paul Gens & Mika Anderson-Coates Jackie Gierymski Glenwood Lions Melvin Goldenbogen Nancy Grindland Christine & Charles Grui	Drew Hagquist Rebecca Hansen Jerome Hanson Troy Harper Ronnie Hartman Heartland Good Sams Kathleen Helmeke Hinckley Lions Janet Hofer Hoffman Lions Mark & Jacquelyn Holper Hopkins Lions Hopkins Noontime Lions Barbara & Richard Houston Mabel Huber Patricia Hughes & Paul Pittman IMED Mobility Inc H.A. Johnson Rebecca & Jeffrey Johnson Connie Jones Patricia & Peter Karle Donald & Anita Karnuth Ida Kirsner Lisa Knazan Kristin Kopp David Kostek Suzanne & Richard Kraft MarySue Krueger Nancy & Sagar Krupa Lake Benton Lions Lake Superior Combined Federal Campaign Sue Lin Lange Dennis Levendowski Gail & George Lewis Lockwood & Darlene Carlson Fund Mitsuko Lutz Wes & Mary Mahlberg	Peter & Cheryl Mairs Stephanie Malone Mary Martin Voncille & Wallace Martin Judith McGregor Gwen McMahon Sandra & Richard Meuwissen Wendy Meyer Gary & Jane Miller Minneapolis Riverview Lions Susan Mitchell Deb Molin Monticello Women of Today Roxanne & David Morrell Doug & Linda Mosier Mpls/Richfield American Legion Post No. 435 Marilyn & Malcolm Hoeck Neal Joanne & Steven Nichols Northern Lights Good Sams Roxann & John Ostendorf Owbo Chapter Good Sams Sylvia Pannuk Nancy & Jeff Parker John Parzych Carla Paulson Perham Lakes Lions Jean Peterson Trevor Porath James & Kimberly Post Mary & Randall Quist Timothy & Julie Rainey David Rasmussen Barbara Redlaczky Diane Reid Wendy Roehlke Roseville Lions Susan Rubens Santo Russo R. Scott Sandison	Sauk Rapids Riverside Lions Marcia Scheele Jennifer Schuler William Lee, Lois Ann & Lynn Scott Peggy & Charles Seelen SEM Sams Kathryn Sherwood Robert Slifer Dave & Marge Skeie Spire Federal Credit Union St Augusta Post No 621 St Paul East Side Lions St. Johns Lutheran Church Missionary Circle R.P. Stamos Paul Stemper Julie & Alex Stolis Wendy Swanson Edith Swiatek & Edwin Haswell James & Sarah Tindall Molly & David Tomsche Claudia Traynor Mary & Raymond Turcotte Thomas Turner Two Harbors Lions UnitedHealth Group Diana Valentine Julie & Jerome Vergin Carlos Villalpando Don & Bernie Waibel Mary Warpeha Mark & Sue Waseen Vern Weaver Rosalee Wedul Mary Jo Wheeler Jean Wilson Howard Wittels JoAnn Wrich Roger & Kathleen Wright Jackie Wulf - JK Interiors Neal & Deborah Wunderlich Alice Ziittel
--	---	---	--

Volunteers

Diana Adamson Mary & Jennifer Alexander Kathryn & Jayson Alexander Dianne Astry Chad & Leah Bauer Jamie Becker Finn Bill Beddie Alicia Blank & Tanner Bob & Mary Branham Sara Braziller David & Susan Bristol Autumn Brodhecker Julia Buege Freeman Jean & Don Burdeski Deb Burke & Pepsi Jennifer Burt Laura Campbell Carol Cantrell Shannon Chambers Vicki & Lou Chouinard Lisa Coleman Sue Crone Jan & John Day Christine Deuker Don Doeksen Mich Edwards Laurie & Ron Ehler Megan Ehler Sara Ehler Lia Enger Jean Euteneuer & Lexi Mike Ferber Stacey Ferguson Leslie Flowers Shelley Frederickson Char Gelfand	Christine Giese Jackie Gohdes Christine Golden & Traeh Esther Graney Kathy Grant Katie Gustafson Nancy Haley Becky Hansen Jeanne Hanson Colleen Hazen Ronnie Hartman The Heffernan family Scott Henry Shelly Hiemer Brenda & Mark Hilburn Peter Hilger Jon Holland Mary Holsen Dawn Hughes Sharon Huikko Sammy Huston & family Sue James Aimee Jaroscak Rita Jesse & Askia Eric Johannes Blair Jones Barry Kennedy Dan Klein Lisa Knazan Dana Knopic Joy & Dave Kraft Kim Kriesel MarySue Krueger Jo Kuball Karen Lampi Anna Laurenzo Jodi LeBaron	Linda Livingston Wiedewitsch Mary Longley Molly Loomis Liz Lucast Jody Ludden Anne & Dale Mackereth Stephanie Magelky & Jeff Lynn Maker Kuechle Penny Marsala Lindsey Matenaer Scott McClure Stephanie McCollum Henry Cathy McGowan Nora & Chris McGreevy Mark & Stephanie McLaughlin Gwen McMahon Kim Medin Erica Miller Tony Mikols Monique Morton Linda Mosier & Ivan Nicole Myslyjek Lori & Melissa Neeb Joanne Nichols Terry Nowak Paul Oberhaus Janice Parrow John Parzych Sandy Pidde Annie Piper Megan Polley	Kris & John Pollock June Prange Maureen Pranghofer Paul Pranghofer Nicole Preste Nicole Quiney Mary Quist Sharon Russell Dora Schroeder Kay Schroven Jennifer Schuler & Reno Carolyn Schurr Rene Schwartz The Schwartz family Darryl Scott Sue Schuster Lisa Simonson Dave & Marge Skeie Amy & Mark Sperry Sharon Steinbrecher Greg Stevens John Stockman Alex & Julie Stolis Lynn Teschendorf & Mikey Becky Thomas Jill Thompson Cindy Thorson Arnold & Blue Brian & Dawn Turner Stephen Usery Sandy Vance Patty VanLandschoot Carlos Villalpando Len Washko The Wedul family Jim Willems
---	--	---	--

Workplace Giving

Jonathan Alexander Karen Blackstone Lisa Boomgaarden Elizabeth Breitkrietz-Miller Zenobia Carlton	Laurie Ehler Jennifer Estes Esther Graney James Hovanetz Jr Dawn Kessler Steve Kittay	Sandra Lee Vance Jessica Mork Elizabeth Otto Lisa Marie Pasquale Trevor Porath Kirby Richter	Janice Rose Flikins Debra Sasse Michael Sweeney Billie Jo Wallraff Karen Wendt Anonymous
---	--	---	---

Nancy & Richard Almi
David Anders
Annamarie Anderson
Holly Anderson
Animal Wellness Center of Maple Grove
Donna Applebaum
Diane & Steven Arenson
Kathryn & John Asmus
Nathan, Jennifer & Olivia Augustine
Ayers & Marian Bagley
Deborah & Richard Bancroft
Steven Barker
Dean Barr
Cynthia Barry
Ann Bechtell
Jamie & Gabe Becker-Finn
Deanna Belden
Dean & Kathleen Bengston
Joyce Bengston
M.E. Bergdahl
Joan Bilinkoff
Joann & Barry Birkholz
Jewell Blacksmith
Judith Blanchard
Carl & Madeline Blegen
Blue Lakers
Pam Bobo
Douglas & Marilyn Booth
Rita & Irwin Boris
Judy & Robert Borsetun
Mary Louise Bowen
Patricia & Jeffrey Bozicevich
Marie Brierly
Rose Mary & Alex Brietkriet
Nancy Brooks
Pat Browne
Margaret Brownrigg
Patti Brufflot
Sondra Brust
Joan Budd
Richard & Delores Buege
Tim Burke
Patty Burmis
Roy Burt
Jeremy & Jody Burt
Betty Busch
Ralph Buske
Barbara & Timothy Callister
Laura Campbell
Vincent Carbonell
Cardinal Kampers
Scott & Sarah Carlson
Kay Carlson & "Bugs"
Margaret & Robert Carolan
James Cassidy
Karen Chesbrough TTE
Dr. Charles Chesney
Vicki & Lou Chouniard

JoAnn Christensen
Kay & Eugene Christenson
Alexandra & Theodore Christianson
Clerk U.S. District Court
Ladonna Cleveland
Cold Spring Lions
Cold Spring Home Pride Lions
Karen & Robert Colin
Columbia Heights Lions
Community Shares of Minnesota
- University of Minnesota
Jennifer Connoly
Kay Conway
Scott Coran
Albert Cournoyer
Lawrence & Sarah Cox
Lynn Cox
Ouida Crozier
Linda & Lyle Dallman
Jason Dalum
Elizabeth De Lay
Christopher Decker
Ann Delano
Vonna & Ben DeLong
Mitchell & Lisa Demarais
Bill Diers
Donna Dietsche
Olivia Dodge
Wendy Dorholt
Allen & Edith Drummond
James & Darcy Dungan-Seaver
Katie Edmond
Serine Ege
Marie Ehrenberg
Dorothy Eide
Elizabeth & Todd Ellingson
Jo & David Fairbairn
Louise & Milo Falk
Patricia Faustgen
Judith Favia
Joshua Ferber
Thomas & Linda Ferber
Greg & Molly Flearman
Rebecca Forman
Angela Frerichs
Darcy & Arlen Freudenberg
Terry & Hugh Fullerton
Janet & John Galvin
Karen & Frank Gardner
Sue-Ann & Gary Garvis
Christina Giese
Barbara & Simeon Glaser
Jacqueline Gohdes
Burton Goldstein
Anita Goulett
Esther Graney
Rebecca Greenwald
Melissa Griffith
Becky Groseth

Lori Hagen Neeb
Heidi & Steven Hamilton
Susan Hammerstein
Linda Haner
Berge & Joann Hansen
Christian & Teresa Hansen
Cheryl & Gerald Hanson
Harbor Lights Sams
Roxanne Harri
Becky Hart
Warren Hartquist
Hawley Lions
Patrick Heffernan
Henderson Lions
Diane Hennes
James & Robin Henrichsen
Sarah Highum
Mary Beth Hill
Shirley & Mark Hoff
Dorothy Holden
HSB Marketing Inc
Gerald & Kathy Huber
John & Carole Humphrey
Daniel & Rachel Hurlbert
Kim Hyde
Judith Ingram
Dean & Roxanne Ingvanson
Melvin & Gwendolyn Jacobson
Kauth Jeanne
David Johnson
Millicent Johnson
Cindy Johnson
Donna Johnson
Gary & Iris Johnson
Gordon Johnson
Darwin E Johnson
Vivian Johnson
Ruth Johnson
Sue Johnson
JRA Financial Advisors
Donovan & Barbara Juliar
Sandra Kahlhammer
Nancy & Marvin Karth
Constance Kasprzak
Jeffrey Kaufmann
Andrea & Mark Kellar
Bonnie Keller
Cheri Kennedy
Kensington Lions
Ruth & Orville Kinsley
Paige & Jason Kite
Sylvia Knazan
Hannah Knazan-Lippman
Dana Knopic
Matthew & Mary Lou Knopp
Sandy Koch
Cynthia & Damon Kocina
Keith Kolle
Connie Kollmann

Joy & David Kraft
Mark Kromery
Coralee & James Krueger
Jeff & Jo Kuball
John Kucera
Katherine Kuehn
Mary Kukas
James Kuppeick
Lake Park Lions
Mary Langner
Jim & Ruth Larson
Leudke LaVonne
Laurisch Lee
Carol Leinonen
Sandra Lee Lenarz
Sharon Lies
Lindberg Animal Hospital
Arlene & Douglas Lindenfelder
Mary & Walter Linder
Ruben & Geraldine Lopez
Mark Lucas
Dianne Lyles
Julie Lyons
Marilyn & Charles Magnuson
Sara & Jeff Manderfield
Marilyn Marion
Marcia Marshall
Jean Martell
Elizabeth McCambridge
Robert & Donna Bedin McCollor
Mark & Stephanie McLaughlin
Mary & Derry McNeill
Kay & Gordon Meier
Beverly & Richard Mensing
Karen & Trent Mikowski-Horsfall
Vireg & Maureen Miller
Hazel Milne
Minne Wheelers Sams
Cathy Montgomery
Dean Montour
Julie & Joseph Moreau
Virginia & Dorian Adams Morrow
Keith & Ann Mortimore
Patricia Moudry
MPLS Eagles Axiliary
Gwen Myers
Diane Nagel
Lois Nelson
Marion Nelson
James Nepp
Anita Nerhus
New Auburn Lions
New Munich Lions
Wink Newcomb
Nimrod Area Lions
Lyonel & Kathy Norris
Gretajo & Wyatt Northrop
Terry Nowak
Karen Obegi

Ferda Olson
Cheryl Osborne
Colleen & Steven Parenteau
Michelle & Raymond Parker
John & Jacquelynn Parzych
Virginia Patnaude
Kyle Pavlik
Pelican Rapids Lions
Patrick & Susan Pelling
Sandra Perreault
Jilene Perreten and Family
Personal Touch Pet Grooming
Al Peters
Ethel Pflieger
Sandy & Jon Pidde
Pine River Lions
Francis Plant
Mary Pohl
Duane & Marianne Polkinghorne
Alexander Porter
Ginna & Allan Portman Amis
Gloria Potz
Virginia Power
Jane Priddy
Heather Printz
Quarry Hill Park Animal Hospital
Lynn Radecki
Suzanne Ramthun
John & Chelon Rasmussen
Lisa Ann Raymond
Colleen & Erik Reichert
Reichert Dental Arts LTD
Richard & Lynn Rew
Kevin & Nancy Rhein
Anne Ricci
Lee Ann Rippentrop
Vicki Riven
D.J. Robbins
Kay Marie Rukavina
Joseph Rukavina
George & Jenny Ruth
Jane Schamber
Schlenner Construction
Rodney & Darla Schmitz
Patricia Schreiber
Ann & Michael Schroeder
R.G. Schulke
Frances Schwantz
Scotttrade
Karyn Seymour
Nancy Shade
James & Celia Shapland
Tonya Sheldon
Ann Shepard
Richard Simma
Maryanne Simonitsch & Gregory Gersch
John Sims
Bob & Jacqueline Singer

Sharon Singleton
Leo Sinna
Joe & Dawn Skelly
Lynn Slifer
Will & Carol Smith
Robin Solac
Dennis Soule
Susan Spence
Mark & Amy Sperry
Carmaline Spurrier
St. Rosa Lions
Staples '93 Lions
Dr. Liz Stoltz
Sharon Sullivan
Lucille Sunderman
Margaret Susag
Amy Swanson
Steve & Linda Szurek
Lucille & Richard Tarasac
Constance Tarasek
Ellen & Doug Thibodo
Thomco Carpet, Inc.
Bruce & Nancy Thorson
Bruce & Diana Tobin
Arvada Toney
Dianne & Michael Trdan
Sylvia Troumbly
United Way
US Bank
Naomi Vagts
Judith Valerius
Bud & Greta Verdick
Linda & John Vlasich
Gloria Vollmer
Monica Waino
Douglas & Martha Wall
Margaret Walsh
Jacqueline Walsh-Carmona
Christine Warburton
Marian Wasvick
Mary Watson
Dena Wiblehauer
Chris & Melissa Wizeorek
David & Cathi Williams
Susan Willis
Willius Marketing
Communications
Jean Wilson
Windmill Project
Karen Witte
Mary Jo Wolf
Wood City Ramblers
Worthington Lions
Toni Yeamans
Andrea & Stephen Yoch
Marilyn Zimmerman
Margaret Zverinova
David & Leone Zwickey

Honorariums

Donated By In Honor Of
Thomas Anderson "Cydney"
Paul & Mika Anderson Gens Dr. Diane Stoller & the 5th floor staff of the Virginia Piper Breast Cancer Center
Dean & Kathleen Bengston Rich Cress's 60th Birthday
Vicki & Lou Chouniard Gwen Wood for Mother's Day
Alexandra & Theodore Christianson Isabelle's Birthday
Jason Dalum Avy Johnson - Happy Mother's Day!
Jason Dalum Warren Hovd on Fathers Day
Thomas & Linda Ferber Mike Ferber
Joshua Ferber My Father, Michael Ferber, the clown
Bonnie Genin "Dog-E-Dog's" adoption
Sarah Highum Rich Cress's 60th Birthday
Shirley & Mark Hoff Lucky Roberts
Patricia Hughes & Paul Pittman "Windsor"
Cindy Johnson Isabelle's Birthday
Sue Johnston Isabelle's Birthday
Jeanne Kauth "Kirby's" owner
Andrea & Mark Kellar Isabelle's Birthday
Matthew & Mary Lou Knopp Rich Cress's 60th Birthday
Sue Lin Lange "Sugar"
Gail & George Lewis "Regis"
Keith & Ann Mortimore "Babe" with love
Jilene Perreten and Family Deb Molin for her years of kindness to "Charlie"
Reichert Dental Arts LTD "Scout"
Naomi Vagts Barbara Tschida's birthday
Margaret Zverinova Isabelle's Birthday

Donated by In Memory Of
Holly Anderson Marty Murphy
Animal Wellness Center of Maple Grove
"Arie" Bazooaband, "Barney" Stuelper, "Buddy" Branch,
"Harley" Cribbin, "Jake" Swatosch, "Panda" Musselman,
"Sam" Creten, "Snickers" Engler, "Waggers" Hemmer,
"Aspen" Baus, "Bubbles" Noren, "Cassie" Rice,
"Hugs" Paulek, "Jasmine" Dahinden, "Sadie" Roney,
"Smockey" Hardy, "Tallon" Bauer, "Zoom" Buth
Deborah & Richard Bancroft In loving Memory of "Oakley" from Grandma & Grandpa
Ann Bechtell Kitty, "Goblin" who fought cancer for 8 months
Judith Blanchard "Misa"
Nancy Brooks "Nipper"
Tim Burke Molly George
Margaret & Robert Carolan "Abby"
Judith Christensen "Beau"
Clerk U.S. District Court Emmett D Dowdal
Cold Spring Home Pride Lions Wayne Schreifels
Ouida Crozier "Fletcher" & "Idgie"
Donna Dietsche Kai Easton Lueck
Allen & Edith Drummond Marty Murphy
Marie Ehrenberg "Beau"
Dorothy Eide "Vinny"

Puppyraisers

Diana Adamson & Paul Oberhaus AJ & Lily
Kathryn & Jayson Alexander Hailey
Mary, John & Jennifer Alexander Eli
Dianne & Doug Astry Fridley
Bill Beddie & Kathy Grant Arthur & Guido
Jennifer Berube Vern
Autumn Brodhecker Faye
Meg Brudney Honey
The Cook family Reebok
Jan & John Day Bea
Beth & Ron Detloff Seymour
The Ehlert family Qwest & Brinks
Leslie Flowers & Scott McClure Viggo
The Grabau family Marley
The Groat family Fergie & Summer
The Heffernan family Jazz & Griffin
Kris Hockbart & Peter Morlock Winston
The Irwin family Lily
The Krause family Radar
Kim Kriesel Regis & Ebony
Julianne Larsen Spencer
Linda Livingston Wiedewitsch Ripley
The McGowan family Monte

The McNamara family Victor
The Mercer family Mac
Mary Nelson Waylon
Michelle & Shay Nelson Jester & Weaver
Mary & Kirk Nesvig Waldo
Megan Polley Geno
Nicole & Adam Quiney Herbie
Shirley Russo Gidget
Dora Schroeder Gander
The Schwartz family Rose
Darryl & Diane Scott Mason
Bill & Mary Sears Elmer
Marge & Dave Skeie Rhett & Wanda
Cat & Greg Stevens Theo
The Stoner family Winnie
The Svoboda family Savvi
Allie Thomson Will
Lianne Thorsen Ripley
Dawn & Brian Turner Herbie
Patty VanLandschoot Rosco
Sandy Vance Pepper
The Zwack family Finn

Memorials

Donated by In Memory Of
Rebecca Forman "Leisl"
Sue-Ann & Gary Garvis "Sunny"
Bonnie Genin "Pup-E", Ruth Thompson
Christina Giese "Shatzi"
Jacqueline Gohdes "Fanny"
Nancy Grindland Lois Grindland
H.A. Johnson "Teko"
Christian & Teresa Hansen "Sadie"
Patricia Hughes & Paul Pittman "Uly"
Vivian Johnson Maggie Jo Heimbuch
JRA Financial Advisors Dr. Robert Ahrens
Lisa Knazan Devorah Knazan Goodman
Sylvia Knazan Devorah Knazan Goodman
Dana Knopic "Lady Shelby Gunderson"
Mary Langner Ginny Kilpatrick
Sandra Lee Lenarz "Radar"
Julie Lyons "Lucky" Lyons
Mark & Jacquelyn Holper Lenora Holper
Mary & Derry McNeill Marty Murphy
Karen & Trent Mikowski-Horsfall "Beau"
Deb Molin "Max Johnson", "Oreo Keller", "Bruin",
"Taz Schuveiller" & "Casper Weeks"
Waino Monica Emmett D Dowdal

Donated by In Memory Of
Keith & Ann Mortimore "Dusty"
MPLS Eagles Axiliary Dorothy Desm
Lois Nelson "Beau" Chouniard
Colleen & Steven Parenteau Marty Murphy
Patrick & Susan Pelling Marty Murphy
Personal Touch Pet Grooming "Nikki", "Nellie", "Snowball"
Heather Printz Marty Murphy
John & Chelon Rasmussen "Beau"
Diane Reid Marty Murphy
Vicki Riven DJ Langfellow
Wendy Roehlike "Tandy Lou"
Jessie Rogers "Lucky"
Kay Marie Rukavina Marty Murphy
Joseph Rukavina Marty Murphy
Sharon Lies "Teko"
Will & Carol Smith "Beau"
Robin Solac Marty Murphy
Carmaline Spurrier Herbert G. Wheeler
Arvada Toney Renee E. Christensen
Judith Valerius Dorothy Dehart
Gloria Vollmer Marty Murphy
Andrea & Stephen Yoch "Murphy"

DEVELOPMENT NEWS

by Janet Cobus

Renfest Pet Gate – Check in dogs and cats visiting the festival. Weekends from August 16 through September 28; Friday, September 26; and Monday, September 1. Receive free admission to the festival on the day you work, a \$6.00 food coupon and a ticket to come back another day. Minimum age is 14 (with an adult). Four-hour morning or afternoon shifts are available.



Renfest Parking Lot – Help direct cars in the parking lot at the festival on September 20, 21, 27 and 28. You receive free admission to the festival before or after your shift. Minimum age is 16. Four-hour morning or afternoon shifts are available.

To volunteer for Renfest, contact Julia at 612-317-3413 or 763-315-5044, or Jennifer at 612-805-1300.

FUNdraising With Saints Baseball



Tuesday,
August 19 –
7:05 p.m.
Lincoln
Saltdogs vs. St.
Paul Saints

Buy a \$15 ticket package and receive: one general admission ticket, one hot dog, a soda voucher and a Saints hat! Hearing and Service Dogs of Minnesota receives \$5.00, and you have a fun time. You can purchase this package online by going to www.saintsgroups.com and typing in

the password (hsdm). You can also help us sell packages by placing a flyer in your community or sending an e-mail to your friends. Contact us to receive the flyer. FUN IS GOOD!

15th Annual Heel and Wheel Fundraising Dog Walk – Sunday, September 14, 2008 – Register Now at www.hsdm.org!

Prizes Needed!

Contact us if you can donate any of the following items for our prize drawing: gift certificates to local restaurants, bed and breakfasts or resorts, tickets to local theatre sports events, or airline tickets to Florida. Thank you!



Summer Barkfest – Dianne Astry, chair of the special events fundraising committee, held a “Barkfest” at her local dog park. She set up an information table, supplied free coffee, juice and bagels, and collected donations. She said, “It was great fun and really easy to do.” If you would like to set up a similar event in your local dog park, contact us for more information.

Macy’s “**Shop for a Cause**” – Saturday, September 20, 2008
Do you love to shop? We need help selling \$5.00 shopping passes to this event and raise money for Hearing and Service Dogs of Minnesota. By purchasing a shopping pass, customers

can shop at any Macy’s store and enjoy a day full of discounts and special events. Call now to request passes.

Yum Yum – It’s Chocolate Time

Everyone loves a good chocolate bar! Would you help us sell our World’s Finest Chocolate bars again this year? You can check out a box of 50 and sell them for \$1.00 each. They will be available at the Heel and Wheel walk on September 14 or in our office. Call now to reserve your box!



Twentieth Anniversary Celebration Committee Forming

In 2009, Hearing and Service Dogs of Minnesota will celebrate its twentieth anniversary! Would you like to help plan a fundraising gala, develop marketing materials, organize a fundraising auction or come up with other creative ways to celebrate this important milestone? Please contact us to learn more.

For information on any of the projects listed here, contact Janet Cobus: [jacobus@hsdm.org](mailto:jcobus@hsdm.org) or 612-729-5986, ext. 153. ☐

Volunteer Spotlight

Leslie Flowers and Scott McClure

At Game Fair 2006, Leslie Flowers stopped at Hearing and Service Dogs of Minnesota’s booth and became interested in fostering dogs in her home. What a lucky day for us!

Leslie and her husband Scott McClure (picture, right) have been busy volunteering with us ever since. Not only do they foster dogs on a short term basis, but they are also puppy

raisers. Leslie has also become involved as a group leader in helping other volunteer puppy raisers with their dogs at monthly training classes.

In addition to Leslie and Scott’s ‘going to the dogs’, they have helped the organization in many other ways. They have staffed our informational booth countless times, done presentations with their puppies in training, worked the pet

gate at the Renaissance festival, and helped assemble office space for the trainers at the facility. Recently Leslie helped make calls at our annual phone-a-thon fundraiser.

Despite busy schedules, Leslie and Scott are always willing and cheerful volunteers for the organization. Hearing and Service Dogs of Minnesota sincerely

Two Dogs In One Package

Kristi Nicholson and Odie

by Laurie Carlson

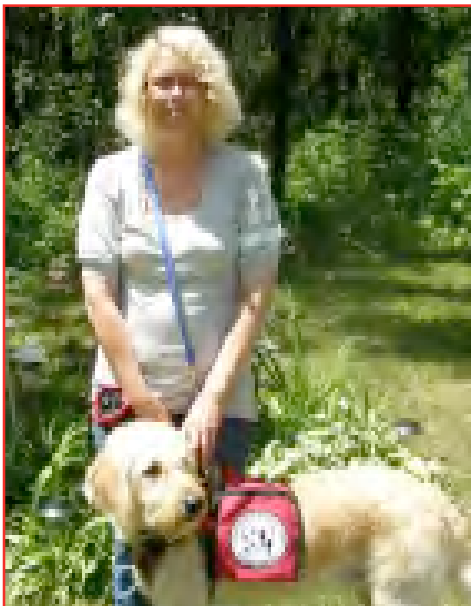
Kristi Nicholson of Wild Rose, Wisc. had struggled with hearing loss since she contracted meningitis at age 8. Life became more complicated six years ago when she suffered a brain infection, which severely affected her balance and further damaged her hearing.

Her balance was so poor that Kristi would weave as she walked and would hold onto things to help her stay on her feet. When she would go out by herself people would confront Kristi or would call the police, thinking she was intoxicated. As this occurred more frequently, she found herself staying at home and reluctant to go out.

Kristi says, "The final straw came when I turned 41 and my doctor advised that I get a walker. I'm too young for that!" She began to search the Internet for solutions, and was intrigued by Service Dogs. Kristi discovered that the organizations she initially contacted turned her down because they did not serve her area. Then she found Hearing and Service Dogs of Minnesota.

Special Programs Coordinator Julianne Larsen contacted Wisconsin field trainer Sheri Stack. Sheri was willing to make the hour-and-a-half drive several times a week to work with Kristi. The next step was finding a dog that could perform the duties of both a Hearing and Service Dog. Kristi needed her dog to act as a brace and to provide counterbalance as she walked. Typically those types of dogs are calm, laid back dogs. Conversely, Hearing Dogs are usually more alert and active. It would take a special dog to do both types of work.

Kristi was matched with Odie, a Labradoodle, and training began. Kristi and trainer Sheri soon discovered that



Kristi and Odie

Odie had quite the zest for life and his enthusiasm showed no bounds which was a real blessing. Odie was willing to persist in his work and had the energy to keep going as long as Kristi needed him. Sheri said, "I'm so proud of Kristi and Odie. It's all been so fun. Kristi is a natural trainer." Husband Tony and their teenage daughters, Amanda and Ashley, also were vital during practice. "It was truly a family working as one team," Sheri says. "They were all helpful and wanted Kristi to succeed."

One hidden advantage to Odie's Hearing Dog training is that Odie will 'tattle' on Kristi's daughters. "He alerts me when he hears someone outside or at the door, so he wakes me up when the girls come home — no matter how late it is!" she says.

Odie's skills have helped Kristi in many ways. He retrieves dropped items so she

doesn't have to lean over to pick them up. He acts as a brace to help her get up if she falls. Most importantly, he serves as a counterbalance when she walks.

Kristi says, "I'm so happy to be finished training. I have the confidence to start living my life again." She now finds more time and energy to garden and attend Lioness meetings. She's found a new best friend in Odie, who is always by her side.

Tony says, "Kristi used to be shy due to her hearing loss and balance problems. Now, with Odie, she goes out a lot more and with so many people asking her questions it has opened a new door for her. Odie has been a life-changing asset for Kristi. The bond those two have is unreal. I never thought a dog could have such an impact on someone's life."

Kristi encourages others who may be thinking of getting an assistance dog. "It's a lot of work and takes love and patience, but it's all worth it." □

THOSE WHO MADE THIS PLACEMENT POSSIBLE

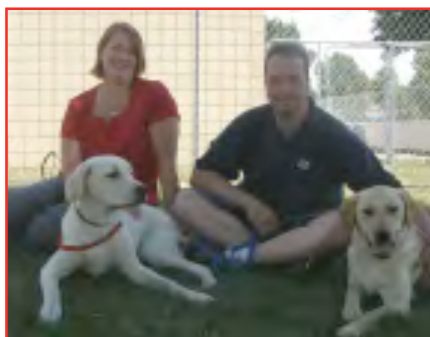
Dog Source
Breeder Donation

Veterinary Services
Life Care Animal Hospital

Puppy Raiser
Marge and Dave Skeie

Foster Home *Field Trainer*
Mary Bente Sheri Stack

Finishing Homes
The Wedul Family, Marilyn Pona and Inmates at Faribault Correctional Facility



appreciates their commitment and dedication. Thank you! □

What about you?

Are you willing to give the gift of time? We need help in the following areas:

- Puppy raiser (14-16 months)
- Short-term dog foster home (2-4 weeks)
- Breeder host family – dog lives

with you while having puppies for the organization. You get to keep the dog after she is retired (approx 2-3 years).

- Special events fundraising committee – help design new ways to raise funds!
- Heel and Wheel Committee – help plan our largest fundraiser! You can be involved in many different areas. □

Independence Comes On Four Legs

Terry Hansmeier and Stanley

Terry Hansmeier of Buffalo, Minn., beams with pride and emotion when he talks about the certification process that he and his Service Dog, Stanley, recently completed with Hearing and Service Dogs of Minnesota. Although Terry grew up with dogs on his family farm, he admits that he was nervous throughout the process. “But the staff and volunteers at Hearing and Service Dogs of Minnesota made it incredibly easy for us to certify,” he says, “and for me to gain a sense of safety and security with Stanley as my Service Dog.”

Two years ago, Terry sustained an injury at work which severed his spinal cord and left him paralyzed from the waist down. “It was devastating for me because I’d been very active with outdoor and physical activities throughout my life,” Terry says. His wife Phyllis found Hearing and Service Dogs of Minnesota on the Internet and arranged a meeting to learn more about how the organization could help Terry.

Terry noted that he had already tipped over in his wheelchair once while he was outside his home; Phyllis was inside, unaware that Terry needed help. “Luckily, a neighbor saw what had happened and came out to help,” Terry says, “but what if the neighbor hadn’t been there?” Terry completed his application and was soon paired



Terry and Stanley

with Stanley, a handsome black Labrador.

Stanley helps Terry pick up dropped items, open and close doors, retrieve an emergency phone, and much more. But perhaps the most important thing Stanley does is bring a smile to Terry’s face and help boost his morale. “He’s gotten me outdoors and back to regular physical activity,” Terry says. “For this, Phyllis and I are so grateful. What you are doing for people in my position is very important and means a lot to us.”

Phyllis adds that the two are thankful that Terry can be more independent with Stanley around. “We’ve really

by Molly Loomis

enjoyed getting to know Stanley,” she says. It wasn’t quite as easy for the family’s other dog, Victory, a Cavalier King Charles-Poodle mix, to welcome Stanley into the family’s life. “But now, Vic and Stanley are good friends,” Phyllis says, “and Vic even tries to mimic Stanley by tugging at closed doors. They are quite a pair!”

Terry and Phyllis say they are amazed by Stanley’s intelligence and by how many commands he knows. Terry says that Stanley “will be a big help to me, especially in an emergency situation. He will also help my wife know that I am safe and secure, which would not be the case without the help of Hearing and Service Dogs of Minnesota.”

Terry continues to make strides to improve his mobility and strength, with Stanley by his side and a smile on his face. □

THOSE WHO MADE THIS PLACEMENT POSSIBLE

Dog Source

Todd Purvis

Veterinary Services

Globe University - Woodbury

Puppy Raiser

Sue Crone

Field Trainer

Laska Parrow

Finishing Homes

The Wedul Family and Inmates at Faribault Correctional Facility

A Special Pair

Sharon Spilman and Sandy

Sharon Spilman of Becker, Minn., was first diagnosed with epilepsy when she was five years old. Sharon has never really felt safe going anywhere alone, due to the constant possibility of a seizure, so she relied on her family and friends to accompany her everywhere. Sharon felt depressed and isolated until, in the spring of 2007, her husband purchased a yellow Labrador Retriever puppy that they named “Sandy”.

From the first day Sharon felt she had an instant connection with Sandy. Her husband, Mark, had planned to

train Sandy for hunting, but when Sharon showed such interest and enthusiasm in teaching Sandy obedience, he encouraged her to take Sandy to classes instead. Sharon began training with Elizabeth Reberk and M.L.D. Obedience Training. Elizabeth also saw the unique bond these two shared and recommended that Sharon contact Hearing and Service Dogs of Minnesota for additional help. Sharon wrote: “I think training my lab Sandy as a Service Dog would give me a sense of security and assist me in my daily living. I also feel I could have a more

productive life with a Service Dog.”

Sharon noted that, “with epilepsy, people often do not recognize that I have a disability and rarely look for my medical alert bracelet if I am having a seizure. Instead, they automatically call an ambulance, which can be unnecessary and expensive!”

Hearing and Service Dogs of Minnesota recognized Sharon’s need for assistance. After Sharon and Sandy

(continued on page 11)

Slim's On The Job

Vicki Brotzel and Slim

by Laurie Carlson

It took Vicki Brotzel of Blaine, Minn., 23 years before deciding to apply for a Hearing Dog. She was missing too many sounds in her home and didn't feel secure.

In 2003, she was paired with Ringer, a Golden Retriever. They bonded and worked well together for three years. "Ringer was my security, best friend and companion," she says. Too early in his life, however, Ringer developed cancer; he passed away in 2006. Devastated at his loss, Vicki says she decided to wait a while before applying again.

As Vicki struggled with the frustration of missing sounds around the house, she decided to finally take a chance on another dog. She bought a Labradoodle puppy and named him Slim. At first, bonding with the new dog was hard. "I noticed that each dog had their own character. I had a hard time at first fully accepting Slim. It was different than with Ringer, who I loved the second I saw him."

Unlike most clients, Vicki initially trained the dog herself. That can be risky, because Hearing and Service Dogs of Minnesota will not consider a pet-dog team until the dog is at least a year old; then the dog must pass health and temperament requirements. "Training a new puppy was more of a challenge than I had anticipated," she says.



Vicki and Slim

Vicki had to teach Slim obedience and good manners, as well as beginning to teach him to alert her to sounds. Learning to sit and stay was probably the hardest part of training for Slim. Vicki had to especially work on was Slim's enthusiasm for people. She worked very hard to curb his impulses to greet everyone he met while out in public. "The easiest part of training," Vicki says, "was how Slim quickly learned how to alert me to the sounds around the house."

Now that the two are a certified Hearing Dog team, Vicki once again has security, even when she's home

alone. "Slim alerts me to someone at the door or a strange sound outside," she reports. "I don't have to worry about my safety if the smoke alarm goes off—Slim makes sure I know about it. Dinner won't burn if I don't hear the oven timer, and there's no need to worry about oversleeping. Slim loves to wake me up each morning!"

It's a new and exciting beginning for the pair, and Vicki now has peace of mind again; Slim's on the job. □

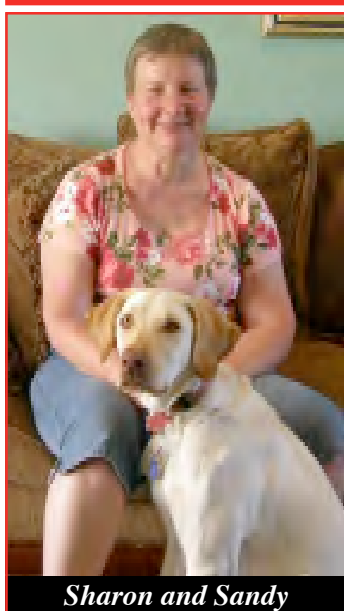
THOSE WHO MADE THIS PLACEMENT POSSIBLE

Dog Source
Pet Dog

Obedience School
Petco - Roseville

Volunteer
Liz Lucast

Field Trainer
Laska Parrow



Sharon and Sandy

completed an application and screening process, the team was welcomed into our unique owner-trained Service Dog program. The process of training a person's own dog can be very challenging but, after many months of training, Sandy can now respond to Sharon's seizures, use her body to brace and stabilize Sharon after a seizure, and retrieve an emergency phone in the house if Sharon falls or is unable to get up. In addition, Sandy now wears a backpack in public with very clear medical instructions if her owner is unable to speak or is unconscious because of a seizure, giving Sharon the sense of security she so desperately needed to venture away from home by herself.

Sharon wants to thank everyone at Hearing and Service Dogs of Minnesota for making this possible. Anyone that meets these two can't deny they are truly a special pair! □

THOSE WHO MADE THIS PLACEMENT POSSIBLE

Dog Source
Pet Dog

Obedience School
M.L.D. Obedience Training

Volunteer
Laska Parrow

Field Trainer
Elizabeth Reberk



Hearing and Service Dogs of Minnesota
 2537 25th Avenue South
 Minneapolis, MN 55406

Nonprofit Org.
 U.S. Postage
 PAID
 Minneapolis, MN
 Permit NO. 4744

Please Note!

If you are receiving more than one copy of Tails from Minnesota, have moved, or you do not wish to receive our newsletter in the future, please call 612-729-5986, 729-5914 tty, or e-mail info@hdsdm.org.

Wish List

- ✓ Dog treats!! (Pupperoni, small Milkbone)
- ✓ LCD computer monitors, 17" or larger
- ✓ Palm Treo Smartphone for Verizon
- ✓ Automotive GPS devices
- ✓ More puppy raisers!
- ✓ Plastic dog crates (large and extra large)
- ✓ Dog grooming services
- ✓ Van with wheelchair lift, good condition
- ✓ 25' extension cords
- ✓ Home Theater system for meeting room
- ✓ Mac G4 Computers, laptop
- ✓ 4'-6' wide ceiling mount video screen
- ✓ Small wagon or hatch-back for delivering dogs
- ✓ Microwave cart with drawer
- ✓ Dog leashes, 6' narrow width
- ✓ Camcorder, Digital
- ✓ Exercise pens, 36'-48'
- ✓ Donated veterinary services
- ✓ Gentle Leaders & Haltis, sizes M & L
- ✓ New Flexi leads for large dogs
- ✓ New Smoke Detectors
- ✓ 8-1/2 x 11 copy paper
- ✓ Plastic "Playschool" benches and table
- ✓ Batteries, AA & AAA
- ✓ Carpet cleaner
- ✓ Frontline Heartworm Preventative
- ✓ Kongs, Nylabones (large & puppy-size)
- ✓ Gift certificates to pet stores and home improvement stores
- ✓ Newer wheelchairs, manual Quickie-type
- ✓ 1st-class stamps
- ✓ Purebred puppies
- ✓ Leashes and flexi leads
- ✓ New dog grooming supplies

A special thanks to all of you who previously supplied us with wish list items! You made our wishes come true! ☐

Upcoming Events

- | | |
|-----------------------------|--|
| August 7 | <i>Tails To Tell, 7:00 p.m.</i> |
| August 16 - Sept. 28 | <i>Renaissance Festival pet gate, Shakopee</i> |
| September 14 | <i>Heel & Wheel event, Lake Phalen</i> |
| September 20 | <i>Tails To Tell, 10:00 a.m.</i> |
| October 28 | <i>Tails To Tell, 6:00 p.m.</i> |
| November 1 | <i>Graduation, location to be determined</i> |
| December 6 | <i>Tails To Tell, 10:00 a.m.</i> |

* All Tails to Tell tours take place at our facility, located at 2537 25th Ave. S., Minneapolis, MN 55406. Please call our office at 612-729-5986 or 612-729-5914 (tty) to reserve a spot.

HEARING & SERVICE DOGS OF MINNESOTA

**HEEL AND WHEEL WALK
 SUNDAY, SEPTEMBER 14**

Platinum Bone Sponsor

graphic
Resources

Gold Bone Sponsors

PETSMART We Serve



**A Heel & Wheel brochure
 is enclosed in the
 center of this issue of
 Tails From Minnesota! ☐**